

SAMPLE TREE CANOPY COVERAGE SHEET

1

MINIMUM LOT COVERAGE REQUIREMENT

WIDTH X DEPTH = TOTAL SQUARE FEET OF LOT



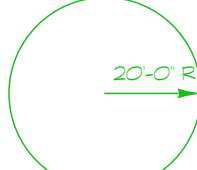
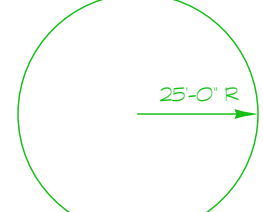
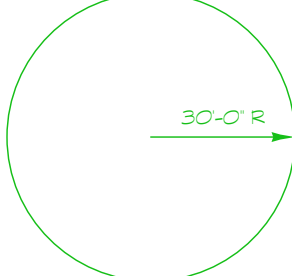
75 X 225 = 16,875 S.F.

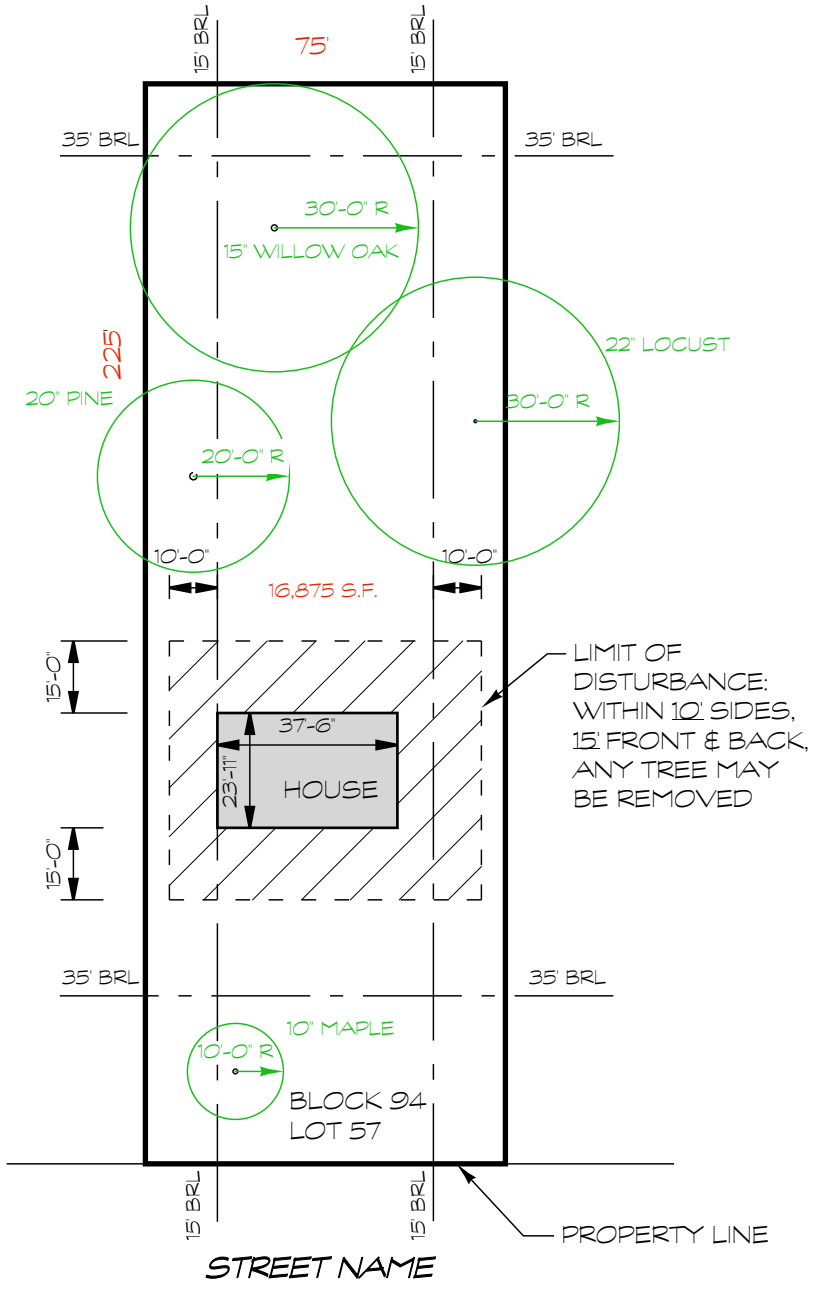
TOTAL SQUARE FEET OF LOT X %40 = REQUIRED CANOPY TO REMAIN

16,875 X .4 = 6,750 S.F.

2

SQUARE FOOT CREDITS FOR DIFFERENT CANOPY SIZES

APPROX. CANOPY SIZE	APPROX. CANOPY COVERAGE
	315 Sq ft
	710 Sq ft
	1260 Sq ft
	1965 Sq ft
	2820 Sq ft



3

EXISTING CANOPY COVERAGE TO REMAIN

	TREE SPECIES	A TRUNK DIAMETER @ 4' ABOVE GROUND	APPROX CANOPY RADIUS	APPROX CANOPY COVERAGE
1				
2	WILLOW OAK	15"	30'	2820
3	PINE	20"	20'	1260
4				
5	MAPLE	8"	10'	315
6	LOCUST	22"	30'	2820
7				
8				
9				
10				
11				
12				

7,215 S.F.

TOTAL CANOPY AREA TO REMAIN